

ITS Company Profile

ITS

Industrial Turbine Services

ITS-Facts

2001

–

Foundation of
Industrial Turbine
Services GmbH Austria

> 300

Projects

2004

-

Foundation of
Industrial Turbine
Services GmbH
Germany

> 600

Customers worldwide

2007

-

Foundation of
Industrial Turbine
Services GmbH
Malaysia

<https://www.turbineservices.de/>

<https://www.turbineservices.at/>

Contact:
contact@turbineservices.de

> 40

Total experience of
knowledge in Field of
GE heavy duty
machines

Phone: +49 (0) 201 43 728 – 0

Company Info:

https://www.turbineservices.at/pdf/ITS_Company_Info

Key Facts

- More than 50 years of experience with GE Heavy Duty Gasturbines and Casings within our team
- Team members participated in the production of more than 500 casings
- Part of development of gas turbine business within AEG-Kanis, Alstom and General Electrics
- Customer and supplier network all over the world
- Casings produced with highest quality with local and experienced partners
- All parts full in line with OEM standards and specifications

references



Europe

- Stadtwerke München
- Stadtwerke Duisburg
- EnBW
- Vattenfall
- EON
- Lanco
- Siemens Energy
- Ethos Energy
- Bayernoil



Europe

- Sulzer AG
- Norske Skog Bruck
- Linz AG
- Mainova AG

references



Africa

- Sirte Oil
- NRCO



Asia

- Indonesia Power
- Petronas
- Tanaga Nasional Berhad
- Sabah Electricity Sdn. Bhd
- Malakoff Corporation Berhad
- Thaipower Company Limited



2001 up to today

We have served the market worldwide with spare parts, engineering, consultancy, service support in the electrical and mechanical fields, plenty of mechanical and electrical modifications, and replacement systems re-engineered by us for parts as well as systems, which are not longer available in the market, anymore.

Conclusion:

We are well experienced with GE Gas Turbines and known for our quality service, have long-term relationships with our major customers worldwide and are prepared for new challenges. Our close networking within the supply chain (e.g. market & suppliers) will help to satisfy customer's needs.

Product overview

ITS

Industrial Turbine Services

Flame Scanner

- <https://www.flamescanner.net/>
- Please visit the above website. We are producing those Flame Scanner in Austria, but orders will be handled out of Germany
- We are offering replacements for Reuter-Stokes, Ametek, Powmat, Nuovo Pignone, TSL & Honeywell
- Current prices (offering discount for more than 10, 20 & 50 pieces per year):
- ITS 184X0254M029: 2.974€
- ITS 184X0254M123: 2.974€
- ITS 967X7179M372: 2.836€
- ITS 967X7179M379: 2.836€

CRT Monitor

- Please visit: <https://turbineservices.de/>
- Replacement for GE277A5758
- Could be combined with our Panel Interface Module



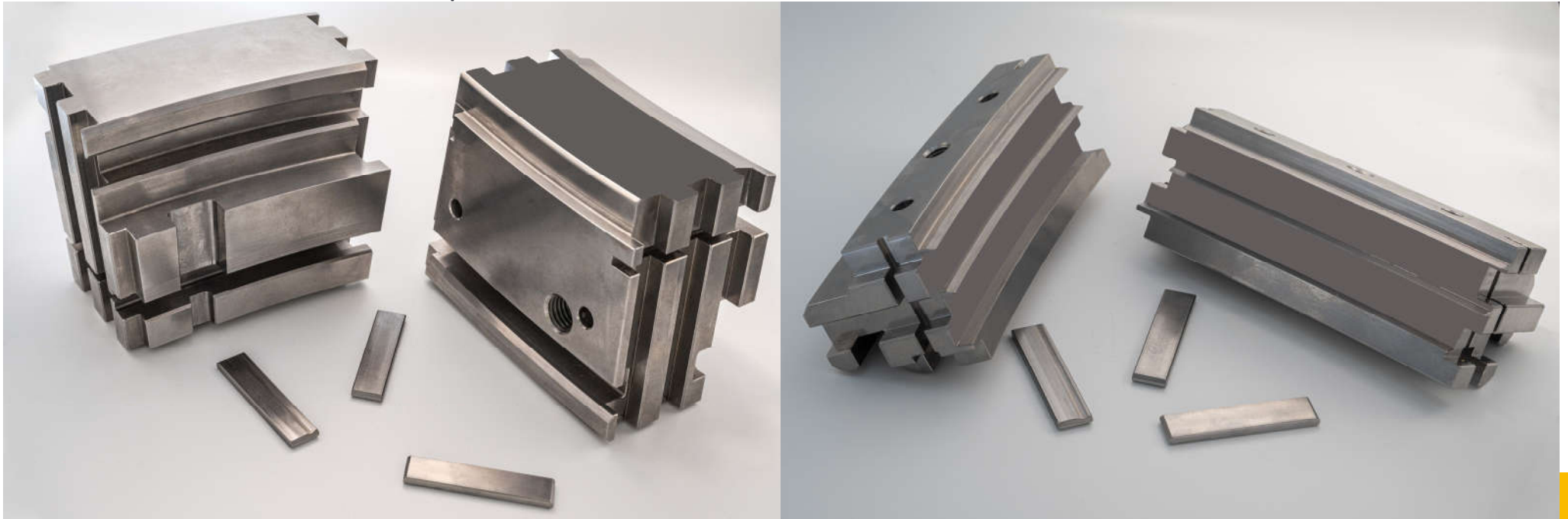
Panel Interface Module

- Please visit: <https://turbineservices.de/>
- Replacement for DS3820PIMB
- GE Electric Turbine Control System: Mark IV



Shrouds

- Please visit: <https://turbineservices.de/>
- 1st and 2nd stage Shrouds
- Frame 5 already in the market
- Frame 3 & 6 under process



Turbine Casings

- Please visit: <https://turbineservices.de/>
- Complete Turbine Casing set for Frame 5 /
- Frame 5 Plenum
- Complete Turbine Casing set for Frame 6
- Frame 6 Plenum
- Diaphragm (Inner Turbine Casing) MS3002
- Diaphragm (Inner Turbine Casing) MS5002
- Any other casings on demand for (MS3002; MS5001; MS5002; MS6001B)

Inlet Casing & Bearing No.1

- cast production
- Machining of the cast by an experienced company
- Internal parts supplied by 3rd party (supplier for GE spare parts)
- Integration of internals by ITS
- Full production process controlled by ITS

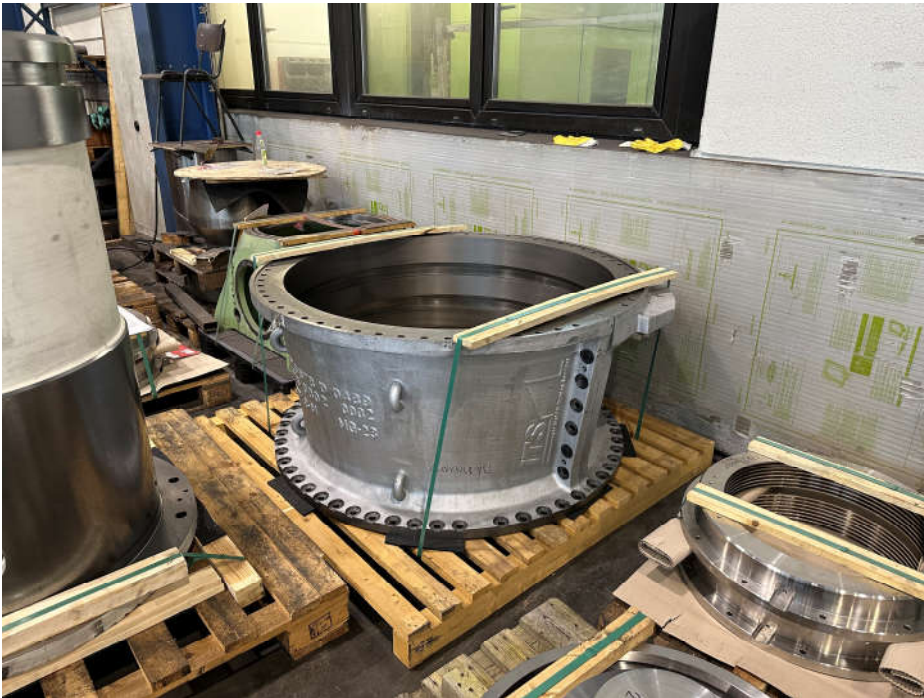
Inlet Casing & Bearing No.1



Compressor Casing Forward & After

- cast production
- Machining of the cast by an experienced company
- Full production process controlled by ITS

Compressor Casing Forward & After



Compressor Discharge Casing

- cast production
- Machining of the cast by an experienced company
- Full production process controlled by ITS

Compressor Discharge Casing



Bearing No. 2

- cast production
- Machining of the cast by an experienced company
- Full production process controlled by ITS

Bearing No. 2



Turbine Casing

- cast production
- Machining of the cast by an experienced company
- Installation of Shrouds by IST (Shrouds out of own production)
- Full production process controlled by ITS

Turbine Casing



Exhaust Frame Assembly

- Production at steelworker
- Diffusor rings produced by 3rd party
- Machining of the inner barrel out of steelworker production
- Steel Construction mechanically processed
- Full production process controlled by ITS

Exhaust Frame Assembly



Facts

- Whole production process based in Germany
- Internals and connecting components sourced through experienced partners in US
- Lead-time: around 6-8 months per casing
- After finishing casings will be packed seaworthy
- Full Quality report based on the testplan
- Customer visits possible and welcome (even at sub-suppliers plants)
- Casings full in line with OEM specification and requirements and based on GE drawings

Spare Parts

- We are offering spare parts for GE Heavy Duty Gas turbines
- Thermocouples
- Speedtronic components
- Connecting elements
- Gaskets
- Bearings
- Couplings
- Valves
- and a lot more...

Thermocouples



We can offer all types of Thermocouples and are working together with experienced manufacturers

Filter





References Frame 5 GT



2004 - Control Retrofit of 2 Gas Turbine Power Stations

- GTKW Thyrow with 8 units GE-Heavy Duty GT's type MS6001B
- GTKW Ahrensfelde with 4 units GE-Heavy Duty GT's type MS6001B

Scope of supplies:

- replacement of the original installed GT-control systems at all 12 GT-units by our own triple redundant and hot stand by control system "MACH 7", that is based on Siemens S7 400H technology
- interconnecting cabling in both power stations as well as on each GT has been renewed.
- modifications on fuel gas- and fuel oil systems has been executed for the adaption to our new control system
- plenty of mechanical modification have been executed during this project
- Furthermore we've added plenty of field devices on the GT's for the redundancy.

This was the biggest control retrofit project for GE gas turbines , ever done in Europe until yet.



2008 - Control Retrofit of 1 Gas Turbine Power Station

- 1 Siemens GT-unit type V82B

Scope of supplies:

- replacement of the original installed GT-control system by our own triple redundant and hot stand by control system “MACH 7”, that is based on Siemens S7 400H technology
- Fuel oil-and fuel gas system has been completely re-engineered and modified in order to be able to operate by our control system MACH 7, that software is in line with GE philosophy
- Furthermore we have replaced MCC motor control center, generator control, generator protection, synchronizing system and the interconnecting cabling has been renewed
- a lot of further mechanical modification has been executed during this project



2014 - Control Retrofit of 1 Gas Turbine Power Station

- 1 unit GE-Heavy Duty GT type MS5001

Scope of supplies:

- replacement of the original installed GT-control system by our own triple redundant and hot stand by control system “MACH 7”, that is based on Siemens S7 400H technology
- Furthermore have replaced MCC motor control center, generator control, generator protection, synchronizing system and the interconnecting cabling has been renewed
- a lot of further mechanical modification has been executed during this project

2016 - Control Retrofit of 1 Gas Turbine Power Station

- 3 units GE-Heavy Duty GT type MS5001



Scope of supplies:

- replacement of all the original installed GT-control system by our own triple redundant and hot stand by control system “MACH 7”, that is based on Siemens S7 400H technology
- Furthermore have replaced MCC motor control center, generator control, generator protection, synchronizing system, AVR automatic voltage system as well as the complete interconnecting cabling has been renewed
- A lot of further mechanical modification has been executed during this project
- Major Inspection on all 3 GT units has been executed in parallel

2018 - Major Inspection on 2 units GE-Heavy Duty GT's MS5001

- Major Insepction of both units



شركة سرت لإنتاج وتصنيع النفط والغاز

SIRTE OIL COMPANY